

seppi m[®]

MULCHING EQUIPMENT SPECIALISTS

Flail Mulchers
S9 · WBS · multipla

Flail Mulchers

80-250 HP



seppi m[®]

MULCHING EQUIPMENT SPECIALISTS





SEPPi M. Professional Flail Mulchers

Since 1971 SEPPi flail mowers have been working to satisfy professionals in agriculture and greenspace maintenance.

Strength and reliable performance, both in grass and wood, saves time and costs compared to less professional machines.

With a vast range of options and accessories, every machine can be equipped to meet specific professional needs, individual requirements or working conditions.

„Mulchers are a long-term investment.

It is important to us that you remain satisfied with your mulcher.“

SEPPI M. SpA

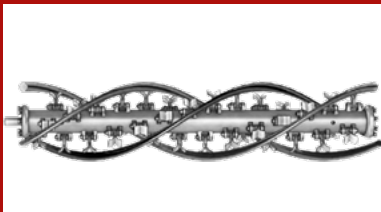
Our Commitment

- > Founded in 1939, we have specialized in manufacturing mulchers since 1971
- > Regardless of the manufacturer or brand, we only choose materials and products that meet our rigorous quality criteria
- > Continuous research and development
- > High quality and optimal service

Your Advantages

- > Reliable equipment as the result of years of experience in the sector
- > High quality materials to take on the harshest work conditions and guarantee maximum durability
- > Advanced technology for an investment for the future
- > Consulting and after sales service: You can rely on us!

Rotors and Tools

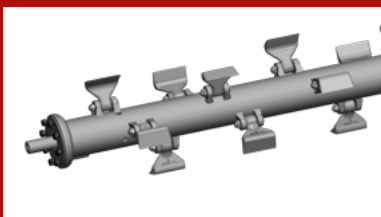


Triple helical rotor

> better power distribution, low noise and vibration.

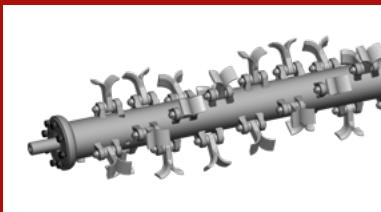
Holders made of forged and tempered steel, high strength screws and heads

> ensures high wear resistance.



Powerful rotors of the product families S9 and WBS with SMO flails for mulching grass, brush and prunings

made of forged steel >self-sharpening and wear-resistant.



SMWA multipla rotor with tools of choice,

standard SMW flails, or optional SML flails or Y knives on shackles for mulching grass and brushwood.



Robust chassis made of high tensile steel with internal wear plates. Tempered counter cutters for a perfect mulching result.



S9 base

100-180 HP

∅ max. 9 cm [3.5 inch]

Heavy duty flail mulcher with reversible linkage

The S9 series machines mulch grass, vegetation and prunings up to 9 cm [3.5"] in diameter. The adjustable rear hood allows you to alter the degree of mulching.

The **S9 base** has a central 3-point linkage. The mulcher is reversible and can be driven in both direction - front and rear.

You can get this model also with motor - ready to go with a hydraulic track loader!

Standard version and characteristics

- > Mulches grass and brush up to 9 cm [3.5"]∅
- > Working speed 3-10 km/h
- > 3 point linkage cat. 2 reversible
- > 1000 rpm gearbox with freewheel and through shaft
- > Belt transmission
- > Adjustable rear hood with rubber protection
- > Front protection with chains
- > Support roller 193 mm ∅
- > Rotor with SMO flails

Optional configuration and accessories

- > 540 rpm gearbox
- > Gearbox with automatic inverter and double freewheel
- > Additional 3-point linkage
- > Front attachment
- > Belt cover on the right (working left)
- > Additional front rubber flap
- > Roller scraper
- > Rubber wheels instead of roller
- > Linkage for for hydraulic track loader / slope groomer and transmission with 80 cm³ motor (available for models 225-300)
- > Attachments for undercanopy maintenance (details see separate brochure)



www.youtube.com/seppimulcher

Tools



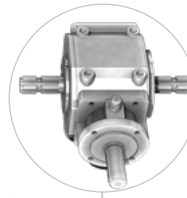
Specifications · S9 base		Nominal tractor power 100-180 HP				
		200 [79]	225 [89]	250 [98]	275 [108]	300 [118]
Working width	cm [inch]	200 [79]	225 [89]	250 [98]	275 [108]	300 [118]
Overall width	cm [inch]	215 [85]	240 [95]	265 [100]	290 [114]	315 [124]
Depth	cm [inch]	117 [46]	117 [46]	117 [46]	117 [46]	117 [46]
Height	cm [inch]	116 [46]	116 [46]	116 [46]	116 [46]	116 [46]
Weight · base value	kg [lb]	870 [1,918]	940 [2,072]	1.010 [2,227]	1.090 [2,403]	1.170 [2,579]
Belts	qty	5	5	5	5	5
Flails	qty	21	24	27	27	30

S9 base · features

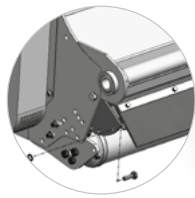
Strong and robust casing made of high-tensile steel, with replaceable wear plates.



Strong welded belt cover minimizes accidental damage



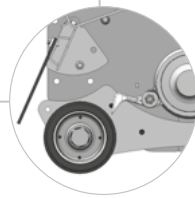
Gearbox for front and rear attachment



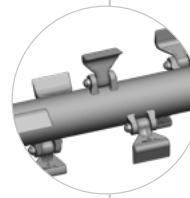
Adjustable hood to set the degree of mulching



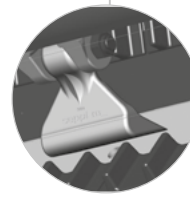
Strong roller with double tapered bearing unit for a long life, the large diameter improves mulching on uneven ground.



Due to the close position of the roller to the rotor, the rotating flails clean the roller, and the cut material is evenly distributed over the top.



Rotor with SMW flails
Low power consumption at maximum throughput with helix rotor technology



Replaceable tempered counter cutters inside the casing provide a perfect result when mulching.



S9 dyna

100-180 HP

Ø max. 9 cm [3.5 inch]

Heavy duty flail mulcher with innovative reversible linkage

The S9 series machines mulch grass, vegetation and prunings up to 9 cm [3.5"] in diameter. The adjustable rear hood allows you to alter the degree of mulching.

The **S9 dyna** is characterized by an innovative, pyramid-shaped 3-point linkage, suitable for front and rear attachment. The top link connection provides high stability and is easily reversed to allow front or rear mount to be achieved without heavy lifting.

Standard version and characteristics

- > Mulches grass and brush up to 9 cm [3.5"]Ø
- > Working speed 3-10 km/h
- > 3 point linkage cat. 2 reversible
- > Linear hydraulic side shift
- > 1000 rpm gearbox with freewheel and through shaft
- > Belt transmission
- > Adjustable rear hood with rubber protection
- > Front protection with chains
- > Support roller 193 mm Ø
- > Rotor with SMO flails

Optional configuration and accessories

- > 540 rpm gearbox
- > Gearbox with automatic inverter and double freewheel
- > Belt cover on the right (working left)
- > Additional front rubber flap
- > Roller scraper
- > Rubber wheels instead of roller



www.youtube.com/seppimulcher

Tools



Specifications · S9 dyna			Nominal tractor power 100 180 HP				
			200 [79]	225 [89]	250 [98]	275 [108]	300 [118]
Working width	cm [inch]		200 [79]	225 [89]	250 [98]	275 [108]	300 [118]
Side shift from middle of tractor	max to the left	L R cm [inch]	133 67 [52 26]	153 72 [60 28]	133 117 [52 46]	151 124 [59 26]	151 149 [52 49]
	max to the right	L R cm [inch]	66 134 [26 53]	85 140 [33 55]	66 184 [26 72]	84 191 [33 75]	84 216 [33 85]
Overall width	cm [inch]		215 [85]	240 [95]	265 [100]	290 [114]	315 [124]
Depth	cm [inch]		127 [50]	127 [50]	127 [50]	127 [50]	127 [50]
Height	cm [inch]		130 [51]	130 [51]	130 [51]	130 [51]	130 [51]
Weight · base value	kg		930 [2,050]	1.010 [2,227]	1.100 [2,425]	1.190 [2,624]	1.280 [2,822]
Belts	Anzahl		5	5	5	5	5
Flails	Anzahl		21	24	27	27	30

S9 dyna · features

Strong and robust casing made of high-tensile steel, with replaceable wear plates.



Innovative, pyramid-shaped 3-point linkage with high stability, suitable for front and rear attachment
FR
FRONT & REAR

Gearbox for front- and rear attachment

Hydraulic side shift: linear up to 68 cm [27"]

Adjustable hood to set the degree of mulching
M-FLAP

Strong roller with double tapered bearing unit for a long life, the large diameter improves mulching on uneven ground.

Due to the close position of the roller to the rotor, the rotating flails clean the roller, and the cut material is evenly distributed over the top.

Rotor with SMW flails
 Low power consumption at maximum throughput with helix rotor technology
HELIX ROTOR

Replaceable tempered counter cutters inside the casing provide a perfect result when mulching.
2 COUNTER CUTTERS

S9 coupé

100-150 HP

Ø max. 9 cm [3.5 inch]

Heavy duty flail mulcher with side shift linkage and compact profile

The S9 series machines mulch grass, vegetation and prunings up to 9 cm [3.5"] in diameter. The adjustable rear hood allows you to alter the degree of mulching.

The side shift is linear and works even while the machine is mowing, with hydraulic control from the tractor seat.

The low and compact profil of the **S9 coupé** allows the machine to mulch very close to the crop and it therefore can work directly under the canopy without damaging fruit.


Standard version and characteristics

- > Mulches grass and brush up to 9 cm [3.5"]Ø
- > Working speed 3-10 km/h
- > 3 point rear linkage cat. 2
- > Linear hydraulic side shift
- > 1000 rpm gearbox with freewheel and through shaft
- > Belt transmission
- > Adjustable rear hood with rubber protection
- > Front protection with chains
- > Support roller 193 mm Ø
- > Rotor with SMO flails

Optional configuration and accessories

- > 540 rpm gearbox
- > Belt cover on the right (working left)
- > Front protection with metal flaps instead of chains
- > Roller scraper



 www.youtube.com/seppimulcher

Tools

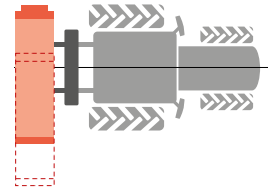


SMO
Flails

Specifications · S9 coupé			Nominal tractor power 100-150 HP				
Working width	cm [inch]		200 [79]	225 [89]	250 [98]	275 [108]	300 [118]
Side shift from	max to the left	L R cm [inch]	126 74 [50 29]	126 99 [50 40]	126 124 [50 50]	126 149 [50 59]	126 174 [50 70]
middle of tractor	max to the right	L R cm [inch]	59 141 [23 56]	59 166 [50 65]	59 191 [23 75]	59 216 [23 85]	59 241 [23 96]
Overall width	cm [inch]		215 [85]	240 [95]	265 [100]	290 [114]	315 [124]
Depth	cm [inch]		112 [44]	112 [44]	112 [44]	112 [44]	112 [44]
Height	cm [inch]		105 [41]	105 [41]	105 [41]	105 [41]	105 [41]
Weight · base value	kg		880 [1,940]	960 [2,116]	1.025 [2,260]	1.110 [2,447]	1.210 [2,668]
Belts	Anzahl		5	5	5	5	5
Flails	Anzahl		21	24	27	27	30

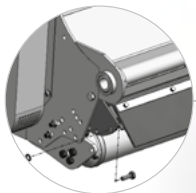
S9 coupé · features

Strong and robust casing made of high-tensile steel, with replaceable wear plates.



Hydraulic side shift:
linear up to 68 cm [27"]

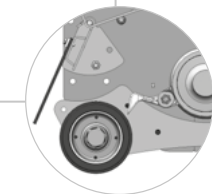
The power belt chassis is very compact - it allows the machine to work under low canopy close to the trunk



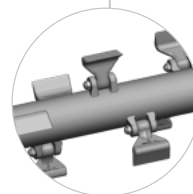
Adjustable hood to set the degree of mulching



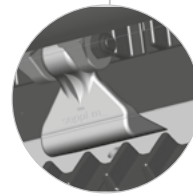
Strong roller with double tapered bearing unit for a long life, the large diameter improves mulching on uneven ground.



Due to the close position of the roller to the rotor, the rotating flails clean the roller, and the cut material is evenly distributed over the top.



Rotor with SMW flails
Low power consumption at maximum throughput with helix rotor technology



Replaceable tempered counter cutters inside the casing provide a perfect result when mulching.



WBS

130-200 HP

∅ max. 11 cm [4.3 inch]

Strong heavy duty flail mulcher with reversible linkage

WBS series machines mulch grass, vegetation and prunings up to 11 cm [4.3"] in diameter. The adjustable rear hood allows you to alter the degree of mulching.

The **WBS** has a central 3-point linkage. The mulcher is reversible and can be driven in both direction - front and rear.

You can get this model also with motor - ready to go with a hydraulic track loader!

Standard version and characteristics

- > Mulches grass and brush up to 11 cm [4.3"]∅
- > Working speed 3-10 km/h
- > 3 point linkage cat. 2 reversible
- > 1000 rpm gearbox with freewheel and through shaft
- > Belt transmission
- > Adjustable rear hood with rubber protection
- > Front protection with chains
- > Support roller 193 mm ∅
- > Rotor with SMO flails

Optional configuration and accessories

- > 540 rpm gearbox
- > Additional 3-point linkage
- > Front attachment
- > Additional front rubber flap
- > Rake hood complete with rakes
- > Fine shred kit
- > Linkage for for hydraulic track loader / slope groomer and transmission with 80 cm³ motor (available for models 225, 300, 350)



[YouTube www.youtube.com/seppimulcher](https://www.youtube.com/seppimulcher)

Tools

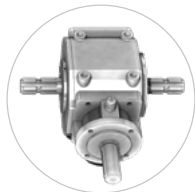


Specifications · WBS		Nominal tractor power 130-200 HP				
		225 [89]	250 [98]	275 [108]	300 [118]	350 [138]
Working width	cm [inch]	225 [89]	250 [98]	275 [108]	300 [118]	350 [138]
Overall width	cm [inch]	245 [96]	270 [106]	295 [116]	320 [126]	370 [146]
Depth	cm [inch]	140 [55]	140 [55]	140 [55]	140 [55]	140 [55]
Height	cm [inch]	125 [49]	125 [49]	125 [49]	125 [49]	125 [49]
Weight · base value	kg [lb]	1.210 [2,670]	1.270 [2,800]	1.370 [3,020]	1.420 [3,130]	1.600 [3,530]
Belts	qty	5	5	5	5	5
Flails	qty	24	26	28	32	36

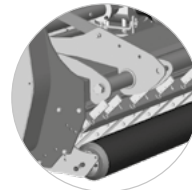
WBS · features

Robust reinforced chassis made of high tensile steel.

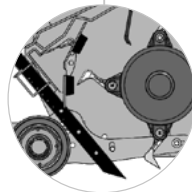
S420



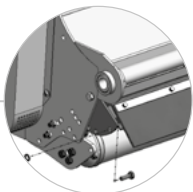
Powerful gearbox with freewheel and through shaft for front and rear mount and reverse drive



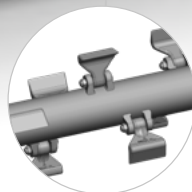
Optional rear hood with rakes for better collection of prunings and branches



Optional fine shred kit - hood with rakes and additional rows of counter cutters



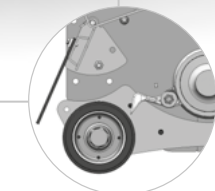
Adjustable hood to set the degree of mulching



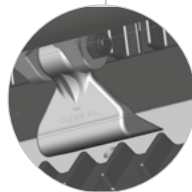
Rotor with SMW flails
Low power consumption at maximum throughput with helix rotor technology



Strong roller with double tapered bearing unit for a long life, the large diameter improves mulching on uneven ground.



Due to the close position of the roller to the rotor, the rotating flails clean the roller, and the cut material is evenly distributed over the top.



Replaceable tempered counter cutters inside the casing provide a perfect result when mulching.



WBS fh

130-200 HP

Ø max. 11 cm [4.3 inch]

Strong heavy duty flail mulcher with innovative reversible linkage

The WBS series machines mulch grass, vegetation and prunings up to 11 cm [4.3"] in diameter. The adjustable rear hood allows you to alter the degree of mulching.

The **WBS fh** is characterized by an innovative, pyramid-shaped 3-point linkage, suitable for front and rear attachment. The top link connection provides high stability and is easily reversed to allow front or rear mount to be achieved without heavy lifting.

Standard version and characteristics

- > Mulches grass and brush up to 11 cm [4.3"]Ø
- > Working speed 3-10 km/h
- > 3 point linkage cat. 2 reversible
- > Linear hydraulic side shift
- > 1000 rpm gearbox with freewheel and through shaft
- > Belt transmission
- > Adjustable rear hood with rubber protection
- > Front protection with chains
- > Support roller 193 mm Ø
- > Rotor with SMO flails

Optional configuration and accessories

- > 540 rpm gearbox
- > Front attachment
- > Additional front rubber flap
- > Rake hood complete with rakes
- > Fine shred kit



www.youtube.com/seppimulcher

Tools



Specifications · WBS fh				Nominal tractor power 130-200 HP				
			225 [89]	250 [98]	275 [108]	300 [118]	350 [138]	
Working width	cm [inch]							
Side shift from	max to the left	L R cm [inch]	133 92 [52 36]	158 92 [62 36]	171 104 [67 41]	183 117 [72 46]	208 142 [82 56]	
	max to the right	L R cm [inch]	66 159 [26 63]	91 159 [36 63]	103 172 [41 68]	116 184 [46 72]	141 209 [56 82]	
Overall width	cm [inch]		245 [96]	270 [106]	295 [116]	320 [126]	370 [146]	
Depth	cm [inch]		140 [55]	140 [55]	140 [55]	140 [55]	140 [55]	
Height	cm [inch]		125 [49]	125 [49]	125 [49]	125 [49]	125 [49]	
Weight · base value	kg		1.480 [3,260]	1.540 [3,400]	1.650 [3,640]	1.700 [3,750]	1.880 [4,150]	
Belts	Anzahl		5	5	5	5	5	
Flails	Anzahl		24	26	28	32	36	

WBS fh · features

Robust reinforced chassis made of high tensile steel.

S420

Hydraulic side shift:
linear up to 68 cm [27"]

Innovative, pyramid-shaped 3-point linkage with high stability, suitable for front and rear attachment - The weight is close to the tractor

Adjustable hood to set the degree of mulching
M-FLAP

Strong roller with double tapered bearing unit for a long life, the large diameter improves mulching on uneven ground.

Due to the close position of the roller to the rotor, the rotating flails clean the roller, and the cut material is evenly distributed over the top.

Powerful gearbox with freewheel and through shaft for front and rear mount and reverse drive
FR FRONTREAR

2 options of choice: rear hood with rakes for better collection of prunings and branches or Fine Shred KIT with 2 additional rows of counter cutters

Rotor with SMW flails
Low power consumption at maximum throughput with helix rotor technology
HELIX ROTOR

Replaceable tempered counter cutters inside the casing provide a perfect result when mulching.
2 COUNTER CUTTERS

SMWA multipla

80-150 HP

∅ max. 5 cm [2 inch]

Large area mulcher for up to 6 meters [20 feet] working width

The SMWA multipla combines 3 machines for mowing large areas such as uncultivated land, parks, golf courses and airports. It mulches grass and prunings up to 5 cm [2 inches] and reaches working widths of 6 meters [20 feet].

The multipla hitch has a central and two lateral mulchers. The central device **SMWA rev cf** can be used independently.

The standard hydraulic system with solenoid valves and remote control allows the lifting of each individual mulcher. The mulchers perfectly follow the contours of the ground for a clean cut.

Standard version and characteristics

- > Mulches grass and brush up to 5 cm [2 inches] ∅
- > Working speed 3-10 km/h
- > Trailer hitch with two lateral mowers and the central SMWA rev cf, with 2 wheels and parking stand
- > 1000 rpm gearbox
- > STOPSAFE safety system
- > Belt transmission
- > Hydraulic system with valves and remote control
- > Adjustable rear hood with rubber protection
- > Front protection with metal flaps
- > Support roller 152 mm ∅
- > Rotor with SMW flails

Optional configuration and accessories

- > PTO drive shaft with freewheel and wide angle
- > Rotor with SML flails
- > Rotor with Y flails
- > 540 rpm gearbox
- > Front protection with metal flaps instead of chains
- > Roller scraper
- > Rear lamp kit with anti-collision bar
- > Mud guards



Tools

- 

Flail
SMW
- 

Flail
SML
- 

Knives
Y DUO (SMW)

Specifications • SMWA multipla		Nominal tractor power 80-150 HP	
Working width	cm [inch]	500 [197]	600 [236]
Overall width	cm [inch]	500 [197]	600 [236]
Transport width	cm [inch]	240 [94]	240 [94]
Depth	cm [inch]	450 [177]	450 [177]
Transport depth	cm [inch]	290 [114]	310 [122]
Weight · base value	kg [lb]	2.780 [6,130]	2.980 [6,570]
Belts	qty	3 x 4	3 x 4
SMW flails	qty	60	66
SML flails	qty	111	123
Y knives	qty	111	123

SMWA multipla · features

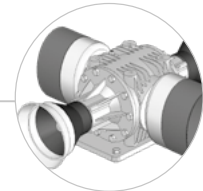
S420

Robust chassis made of high tensile steel.

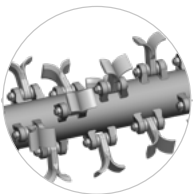
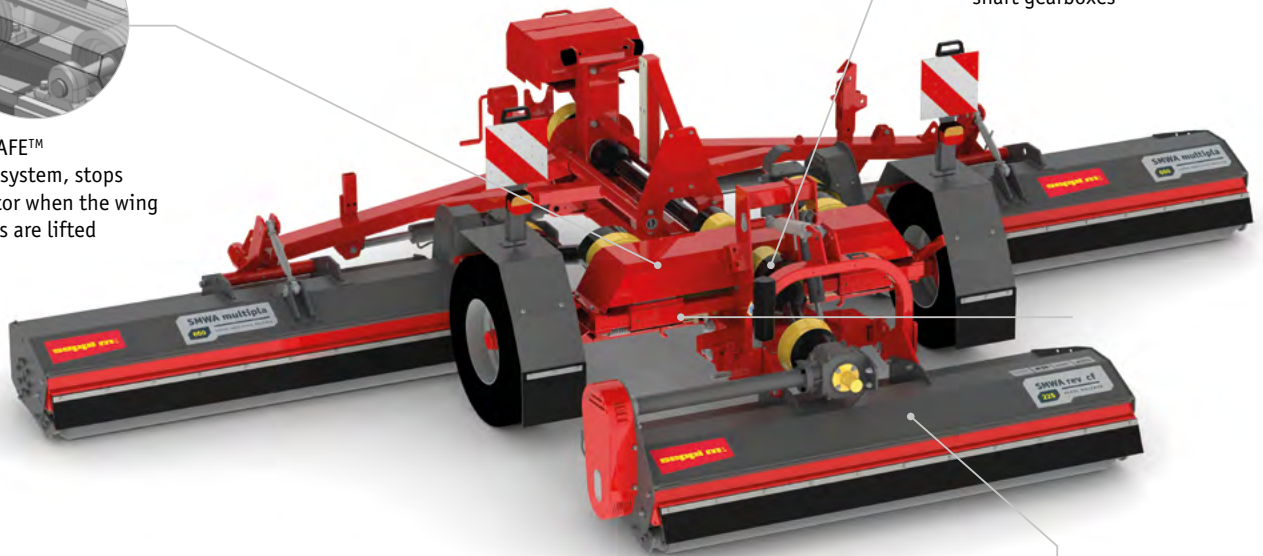
Functions of the hydraulic system:
 · Lifting of mulchers and enable safety hooks
 1 double acting connection required



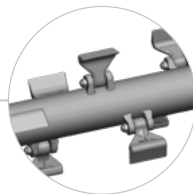
STOPSAFE™ safety system, stops the rotor when the wing mowers are lifted



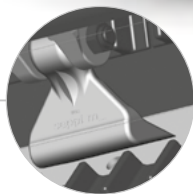
Transmission with 3 input shaft gearboxes



Optional rotor with Y flails
 HELIX ROTOR

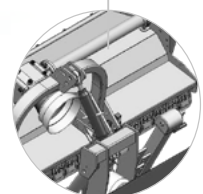


Helical rotor with SMW flails



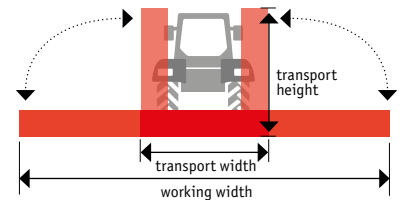
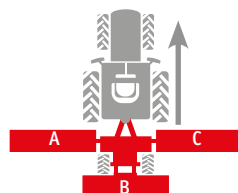
Double counter cutters inside the casing provide a perfect result when mulching.

2 COUNTER CUTTERS



Central machine for independent use

	A	B	C
500	175 cm [69"]	200 cm [79"]	175 cm [69"]
600	200 cm [61"]	225 cm [89"]	200 cm [61"]



Each single mulcher can be folded up for transport and parking.

S9 multipla

100-250 HP

Ø max. 9 cm [3.5"]

Powerful large area mulcher for up to 8 meters [26 feet] working width

This multipla combines 3 powerful S9 mulchers that are not only used on large lawns such as golf courses and airports, but also prove their skills in stubble fields shredding demanding material quickly and extensively. It mulches grass and prunings up to 9 cm (3.5 inches) and reaches working widths up to 8 meters (26 feet).

The S9 multipla is available in 4 configurations. With the trailer hitch of the standard version the mulchers are pulled forward. The optional variations are rear mounted to a 3 point linkage, one model is designed for moving forward and the other one prepared for a pushed machine is moving in reserve. In all cases the central mulcher **S9 base** can be used independently, also in front of the tractor. Another version with 3-point linkage has two machines and can be used in combination with a front mulcher.

The mulchers adapt to the terrain during the journey and can be lifted simultaneously via the hydraulic remote control.

Standard version and characteristics

- > Mulches grass and brush up to 9 cm [3.5 inches] Ø
- > Working speed 3-10 km/h
- > **Configuration C1: Trailer hitch** with two lateral mowers and the central S9 base, with 2 wheels, mud guards and hydraulic parking stand
- > 1000 rpm gearbox
- > Belt transmission
- > Hydraulic system
- > Tristop pneumatic brake system
- > Automatic greasing system
- > Adjustable rear hood with rubber protection
- > Front protection with chains
- > Support roller 193 mm Ø
- > Rear lamp kit and chevrons
- > Rotor with SMO flails

Optional configuration and accessories

- > **Configuration C2:**
3 point linkage - 3 mulcher forward drive
- > **Configuration C3:**
3 point linkage - 3 mulcher reserve drive/push
- > **Configuration C4:**
3 point linkage - 2 mulcher forward drive
- > PTO drive shaft with wide angle (compatible with C1)
- > PTO drive shaft (compatible with C2,C3,C4)
- > Roller scraper



[YouTube www.youtube.com/seppimulcher](https://www.youtube.com/seppimulcher)

Automatic greasing system for rotors and rollers

Tools



Flail
SMO

Specifications · S9 multipla		Standard - C1	C2	C3	C4
Working width	cm [inch]	800 [315]	800 [315]	800 [315]	800 [315]
Overall width	cm [inch]	805 [317]	805 [317]	805 [317]	805 [317]
Transport width	cm [inch]	295 [116]	295 [116]	295 [116]	295 [116]
Depth	cm [inch]	495 [195]	290 [114]	290 [114]	162 [64]
Transport depth	cm [inch]	395 [156]	395 [156]	395 [156]	395 [156]
Weight · base value	kg [lb]	4.950 [10,910]	4.500 [9,920]	4.500 [9,920]	3.400 [7,500]
Belts	qty	3 x 5	3 x 5	3 x 5	2 x 5
SMO flails	qty	87	87	87	60
Nominal tractor power	HP	100-250	100-250	100-250	100-250

S9 multipla · features

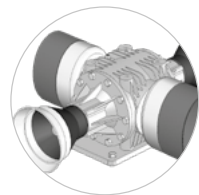
Strong and robust casing made of high-tensile steel, with replaceable wear plates.



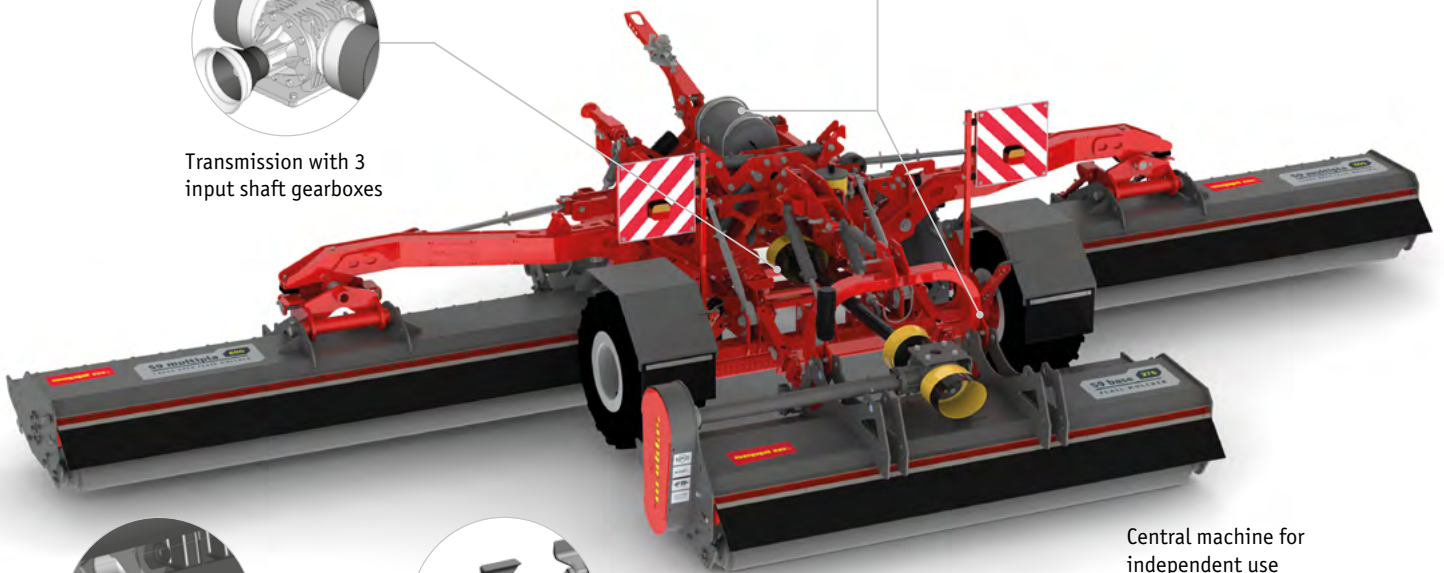
Functions of the hydraulic system:

- Lifting of mulchers including safety hooks
 - Lift limiter for a fast turnaround
 - Towed version C1 with hydraulic parking stand
- 1 single and 1 double acting connection required

TRISTOP break system enable service, parking and emergency brake functions

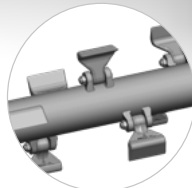


Transmission with 3 input shaft gearboxes



2 COUNTER CUTTERS

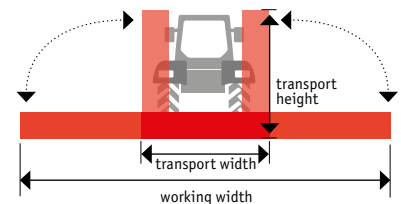
Replaceable tempered counter cutters inside the casing provide a perfect result when mulching.



HELIX ROTOR

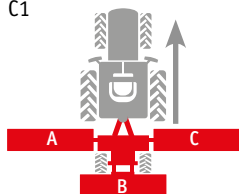
Rotor with SMO flails
Low power consumption at maximum throughput with helix rotor technology

Central machine for independent use



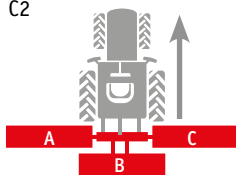
4 Configurations - assembly combinations

C1



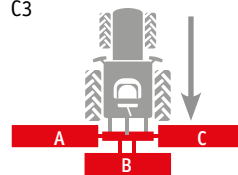
Trailer hitch with 3 machines forward drive

C2



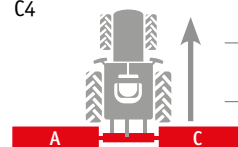
3 point linkage with 3 machines forward drive

C3



3 point linkage with 3 machines reverse drive - push

C4



3 point linkage with 2 machines forward drive

A	B	C
300 cm	275 cm	300 cm
[118"]	[108"]	[118"]

seppimulcher
mulching equipment specialists

Flail Mulchers
20-120 HP

seppimulcher
mulching equipment specialists

Offsetting Mulchers

seppimulcher
mulching equipment specialists

Equipment for Undercanopy Maintenance

seppimulcher
mulching equipment specialists

Rotary Mowers

seppimulcher
mulching equipment specialists

Boom Mounted Mulchers

seppimulcher
mulching equipment specialists

Pick-up Mulchers

seppimulcher
mulching equipment specialists

Discharge mulchers for collection into trailers

seppimulcher
mulching equipment specialists

Stump & Root Grinders

seppimulcher
mulching equipment specialists

PTO Forestry Mulchers

seppimulcher
mulching equipment specialists

Stone Crushers and Forestry Tillers

seppimulcher
mulching equipment specialists

Mulchers for Compact Loaders

seppimulcher
mulching equipment specialists

Excavator Mounted Mulchers & Stump Grinders



SEPPI M. SpA|AG Italy
Zona Artigianale 1 Handwerkerzone
I-39052 Caldaro|Kaltern (BZ)
T. +39 0471 963 550
www.seppi.com

SEPPI M. USA
Division of SEPPI M. SpA
9077 Gold Park Drive
West Chester, OH 45011
T. +1 513 443 6339

f y i /seppimulcher

